



Newsletter

Winter 2022

Welcome to Winter!

The latest updates

AVS have been hard at work throughout the Summer and Autumn with a variety of projects! Some new, some on going and some of which we are excited to see the completion of and our designs becoming a reality. In this edition of the AVS Newsletter we shall share with you:

- London Underground works with Gateway, Henny and Links Signs.
- AVS links with the local community.
- Completion of Salters Heath for AB Canham.
- Signage Boards.
- Tricky Staircase.



Art work by Steve Dennis from Skulls and Orchids

London Underground

With various companies

AVS E&M has always had an involvement in The London Underground projects with a variety of different companies and a variety of different end products. This year has been no different and has seen us working alongside Links Signs, Henny, and Gateway.

This year we have been revisiting an old staple of ours and fabricating platform end barriers (seen to the left) for Gateway Construction LTD. We provided different sizes of gates and barriers, all with different specific details such as types of locks, types of hinges etc. across 6 stations.

We have had a relationship with Henny for many years now and we are always pleased to have a collaboration with them. In the last couple of months, we have been working hard on an ongoing project for Liverpool Street Station. In this project we have been tasked with fabricating and installing mild steel door

frames for several doorways and two sets of mirrored stainless steel swing gates.

This Autumn has seen us fabricating and installing poster infill panels at bank station, on behalf of Links Signs. These can be seen in the below image. They are brushed finished stainless steel and lend a neat, smart finish to the displays all the commuters of the tube see day to day.



Marble Arch end of platform barrier and gate for Gateway.



Poster panel infills at Bank station for Links Signs.

Fleetdown United Football Club

We are now sponsoring Fleetdown United Football Club and have provided them with their kits for the coming season. We feel that being a part of the inspiration for future generations of female football stars and the progression in Women's football is hugely important and we could not be prouder of the team!



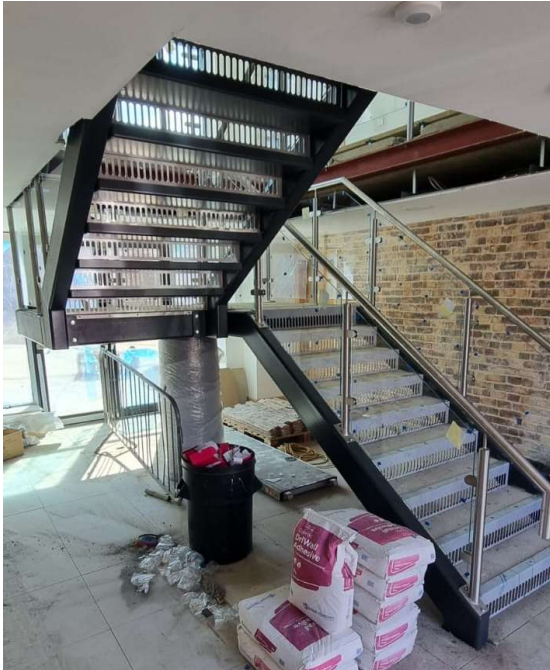
GOSH



We continue to support The Great Ormond Street Hospital for Children and so far, have donated £1000 to their cause.

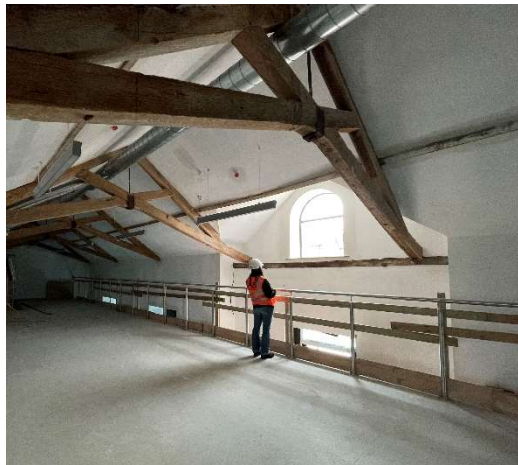
Salters Heath for AB Canham and Sons

You may remember from our spring newsletter we were enlisted by AB Canham and Sons to provide a full turnkey operation, providing staircases and balustrades on their vast project at Salters Heath Farm. The project was converting a number of old farm buildings and barns into luxury office space.

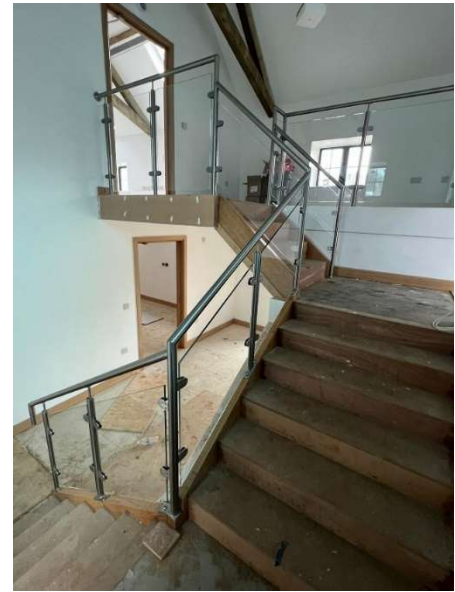


Above you can see the mild steel feature staircase in the new building AB Canham built to fit with the other heritage buildings. With its open design vented risers, it allowed for light to travel from the large doors and window at the back of the building, right the way to the glass fronted entrance, creating an open feel.

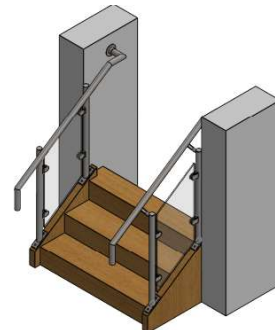
Below is the first of the old buildings at the farm. A beautiful building with original features such as the stunning oak beams. It was important that the designs for this were in keeping with the old but still modern and clean as well as functional for the office space it was to become.



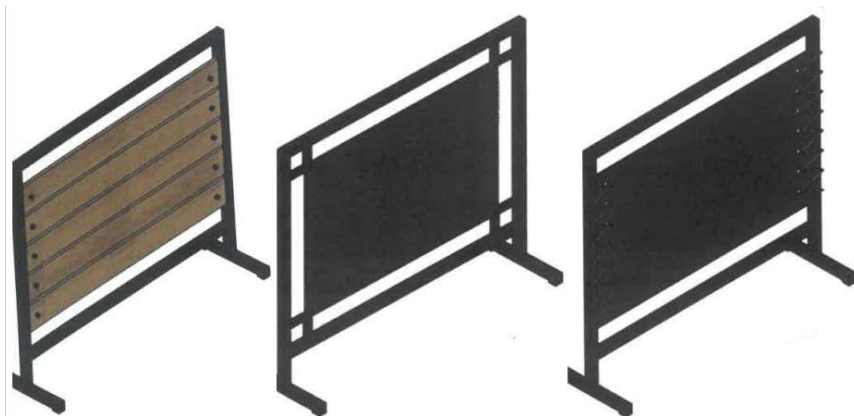
We certainly achieved this by pairing the solid oak staircase with a stainless steel and glass balustrade and the mezzanine fronted with stainless steel and glass, allowing a balcony view down to the large barn style doors and heritage arched window at the front of the building.



The third original building had a more individual shape to its stairways with steps needed to different areas. The main staircase had been built in oak much the same as the first building and again was fitted with stainless steel balustrades and glass extending that sophisticated feel to all 3 buildings we worked on. Other sections within the building were designed to match the mainstairs, shown in the rendering below.



Designs by Jamie Kingbrooks



Examples of signage board choices for a local coffee shop chain.

Local Signage Boards

AVS has been approached by a local signage company to fabricate and supply a variety of signage boards (Examples shown above). These will be used to advertise a local coffee shop chain. Displaying the name of the company as well as the specials for that day.

It is a company with which AVS have not partnered previously with and so we are very excited with this new potential relationship.

Commercial Space Staircase



Designs by Jamie Kingbrooks

We have been working at a commercial premises for a company who needed a particularly tricky staircase designed. Other companies had previously turned it down and stated that it could not be done! However, as you can see from the images above AVS of course found a way to make it work. And not just work but to look great at the same time!

We designed, fabricated, and installed the staircase and I think you'll agree our site team did an expert job.