



Newsletter

Spring 2022

Welcome to Spring!

The latest updates

AVS have been hard at work throughout the spring with a variety of projects! Some new, some on going and some of which we are excited to see the completion of and our designs becoming a reality. In this edition of the AVS Newsletter we shall share with you:

- How our 3D scanning continues to be of great benefit us and some of the projects underway involving the scanner.
- Our ties to the local community.
- A selection of ongoing projects we hope to see completed in the summer.
- The completed works at Finsbury Park Retail Unit, a multi aspect project which we are delighted with the end results of.
- Our continued connection with WSL and being entrusted with work at their head office.



Art work by Steve Dennis from Skulls and Orchids

3D Scanning

With the Leica RT360 scanner



Scanner being used at Bank Underground Station for surveys ahead of undergoing drawings.

Since starting our journey with Leica late last year we have been thrilled with the ease and the accuracy of the technology. The increased speed against traditional surveying methods has improved the efficiency of each survey and has provided us with greater accuracy of dims for our draughtsman, Jamie Kingbrooks, to draw his designs from.

The kind of projects that we have so far been attending with the scanner are quite varied and shows the diversity of its use.

In the image to the left is a scan taking place at Bank Underground Station using an extended tripod to reach heights necessary for scanning platform and lower circulation area ahead of designing and fabrication of vitreous enamel and stainless-steel cladding.

We have also been scanning for Elephant

and Castle Underground station. This time we used a standard tripod to survey the platform and gain the information needed to design an infill panel for the disabled access ramp to avoid items being deposited behind it.

Then, below by contrast you can see a scan taking place at a heritage site in London for a new iron handrail in keeping with the church.



Bean Primary School Football Team



We are now sponsoring Bean Primary School's football team and have provided them with their kits for the coming season.



GOSH



We continue to support The Great Ormond Street Hospital for Children and so far, have donated £1000 to their cause.

Salters Heath for AB Canham and Sons

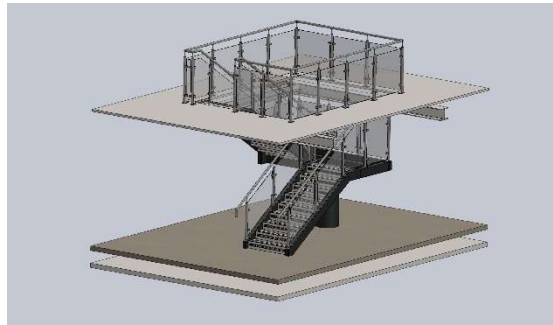
AB Canham and Sons are taking on a vast project converting a number of old farm buildings and barns into luxury office space at Salters Heath.

The have enlisted us to provide a full turnkey operation, providing staircases and balustrades inside the buildings and so this spring we have been on site scanning stunning buildings for surveys.



Above you can see one of these buildings which Jamie Kingbrooks will shortly be commencing drawings for a feature staircase.

The building itself will be glass fronted looking through to the mild steel staircase, powder coated in black and grey. Each step will have vented risers allowing for a continuation of the open feel right through the lower level. (See right).



Designs by Jamie Kingbrooks.

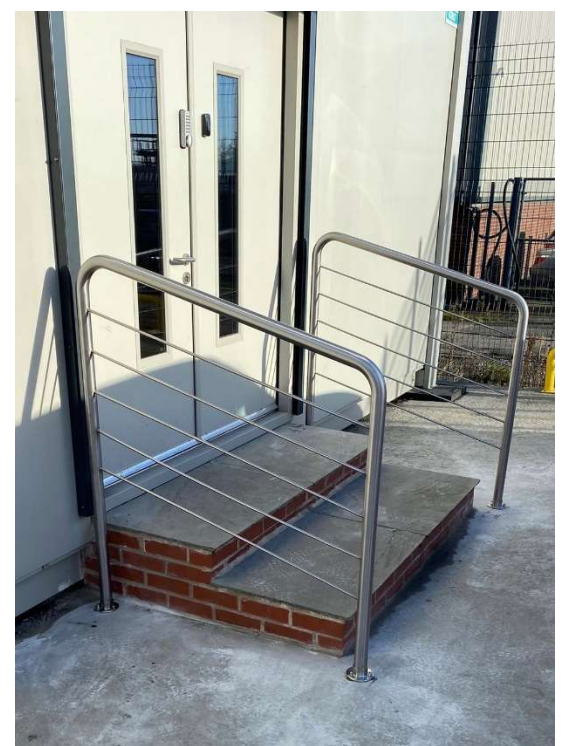
Another two buildings will require a balustrade as well as mezzanine edging. The stainless steel and glass balustrades will add a beautiful modern design aspect alongside the oak staircase, the vaulted ceilings and old brickwork of the old barns.



It is always nice to be taking on a unique project with such a diverse range of aspects and we cannot wait to share updates on the progress in our summer newsletter.



WSL Head Office



We continue to work alongside WSL on a variety of jobs and so it is really wonderful to be asked to complete works at their own head office! When a client appreciates the level of expertise and the quality of our work to this level it really means something to us.

The request they gave us was to design, fabricate and install balustrades for a small flight of steps.



New wall and ceiling cladding and new flooring installed at Finsbury Park Retail Unit

Finsbury Park Retail Unit

Spring has seen us complete on a project with Global Rail Construction LTD at the Finsbury Park Retail Unit.

With this project we were tasked with completing intrusive surveys and producing fabrication drawings for the wall cladding, ceiling tiles and the flooring.

The walls cladding was manufactured, supplied, and installed, in mild steel PPC panels in white to match existing RAL, with Unistrut substructure for mounting.

The ceiling was created to match with the existing tiles mounted to the original ceiling supports

The floor tiles were new GRP anti slip flooring fitted using a polyurethane adhesive.