



# Newsletter

Spring 2023

## Welcome to Spring!

The latest updates

The sun is starting to peak out from behind the clouds at long last and we thought we would share with you the projects we have been working hard on throughout this cold and dreary winter. Some long-term projects have drawn to a close and we have had a number of different productions going on alongside them. In this edition of the AVS Newsletter we shall share with you:

- Liverpool Street Station Frames and Mirror Polished Gate
- AVS links with the local community
- Boisdale's Stag Plinth
- Wembley Gate
- End of Platform Gates and Barriers



Art work by Steve Dennis from Skulls and Orchids

## Liverpool Street Station

### Fire Door Frames and Mirror Polished Gates



Mild Steel Fire Door Frames

AVS E&M have had a strong relationship with Henny for many years now and we are very pleased to be working alongside them yet again. We were commissioned to design, fabricate, and install mild steel fire door frames for several doorways and two sets of mirrored stainless steel swing gates in Liverpool Street Station.

The frames kept us on our toes, with a few trials and tribulations along the way. Each doorway being a different size meant that surveys had to be meticulously carried out with no margin for error. Working with other contractors added other variables to the table as well. But over many visits to site and a few adjustments to the plans they were installed perfectly.

The mirror polish steel is not the easiest material to work with and due to the very particular and time intensive polishing process it is not something our fabricators can practice

things head on and with hard work and the help of a supplier of ours, Engineering Utilities, we found a fantastic polishing package which allowed us to create the amazing finish you see on the gates to the left! They really are quite the statement!



Mild Steel Fire Door Frames

## Battersea Dogs and Cats Home BATTERSEA



Here at AVS we really believe in giving back to our local community and with the local branch only five minutes away we felt that we could help them. We have been hard at work collecting towels and other items for them to use for all the cute animals awaiting their forever homes.

## Kidney Research UK



Kidney disease is something incredibly personal to us here at AVS and so anything we can do to support it we will do! Recently our MD Matt has cycled 850KM and raised £1435 for the cause.



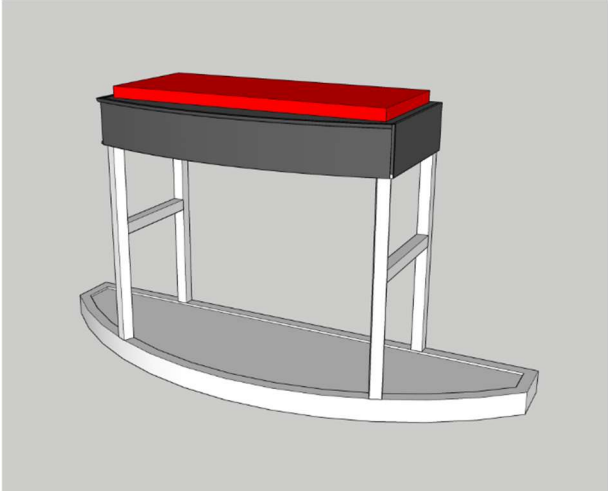
---

---

# Boisdale Stag Plinth

Boisdale is a restaurant in canary wharf which AVS have worked with for many years now completing reactive maintenance as well as bespoke features for the restaurant and kitchens.

This time around we were tasked with an update to their bar area 'Hine Bar'.



They had a large statue of a stag which weighed roughly 30 kilos. This was to match the Hine Cognac logo as the bar is sponsored by the brand.

The stag needed to be placed on a plinth above the bar and given its significant weight, the plinth needed to be sturdy and strong.

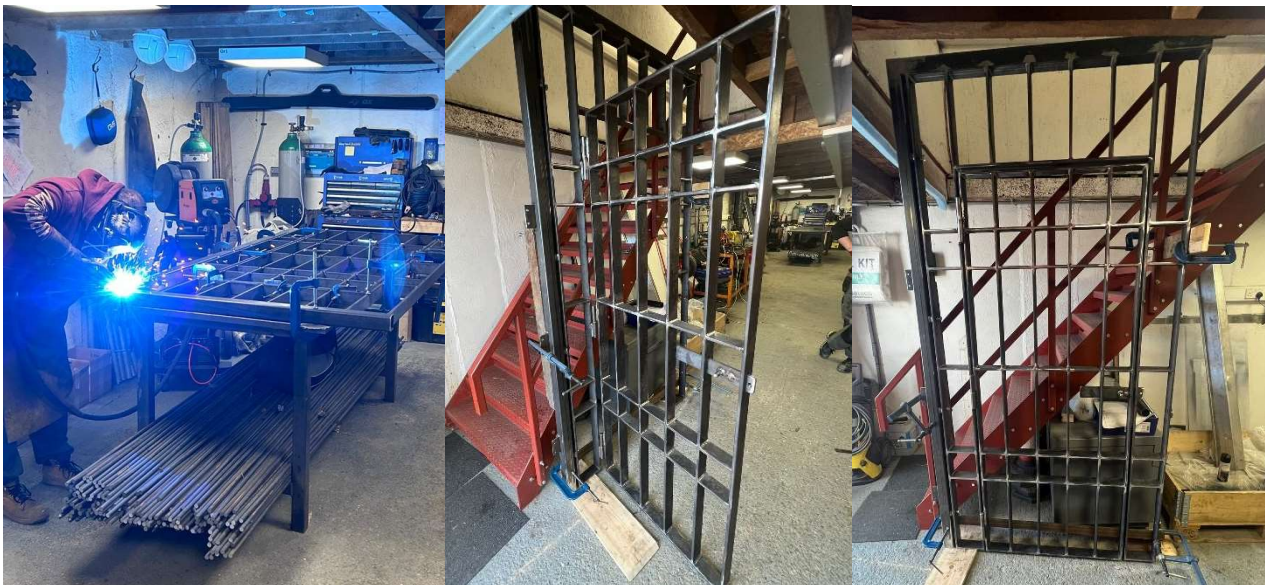
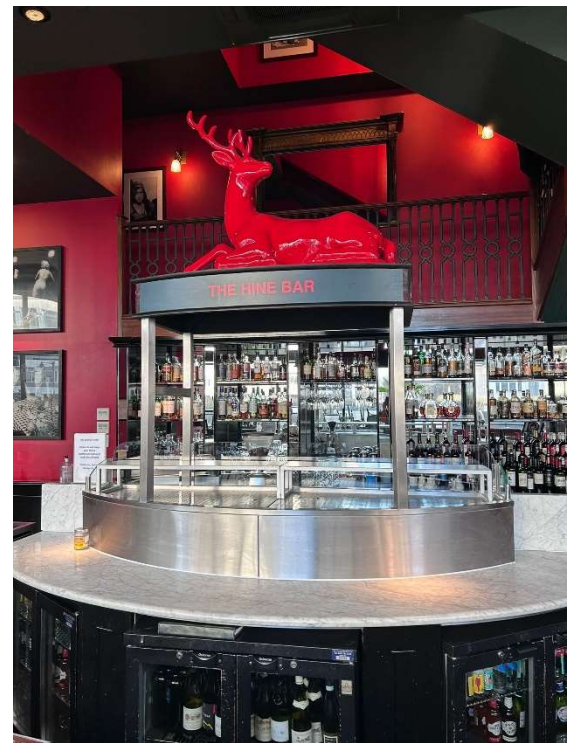
To ensure this we created a structure made from stainless-steel box sections with additional horizontal supports on either side to keep the integrity of it. At the top was a stainless-steel plate to hold the stag on.



The décor inside boisdale is very important to their identification as a brand and so despite needing to be made from stainless steel we had to design the project to be in keeping with the red, black and wood existing in the restaurant.

Our expert team designed and created a wood cladding to fit the structure. The wood had to be a soft wood so that it would be more malleable. It was steamed and moulded to shape, to give the curved front needed to match the bar below. Once the cladding was secure it was stained using wood stain to give the impression of a much darker harder wood to match that seen through out the rest of the restaurant.

The stag now sits pride of place in the oyster bar at boisdale restaurant and gives a striking first impression to all guests.



---

---

# Wembley Gate

This project is still in the production stages but as you can see by the pictures above it is coming along very nicely.

We are working alongside Cleshar to fabricate a new gate for Wembley underground station. This involved surveying an existing gate on site and reproducing it to create a matching one.

Made from mild steel and MIG welded together, the thick, heavy-duty gate (much reminiscent of a prison gate) is made to last a lifetime!

---

---

# End of Platform Barriers



We're back at it again! You may remember back to last year when we were hard at work on a production line of end of platform gates and barriers. We are now back up and running with Gateway Construction requesting a variety of barriers and gates for different underground stations. In these pictures you can see the very start of fabrication. We aim to have them installed later this month where they will be a far cry from these raw materials!